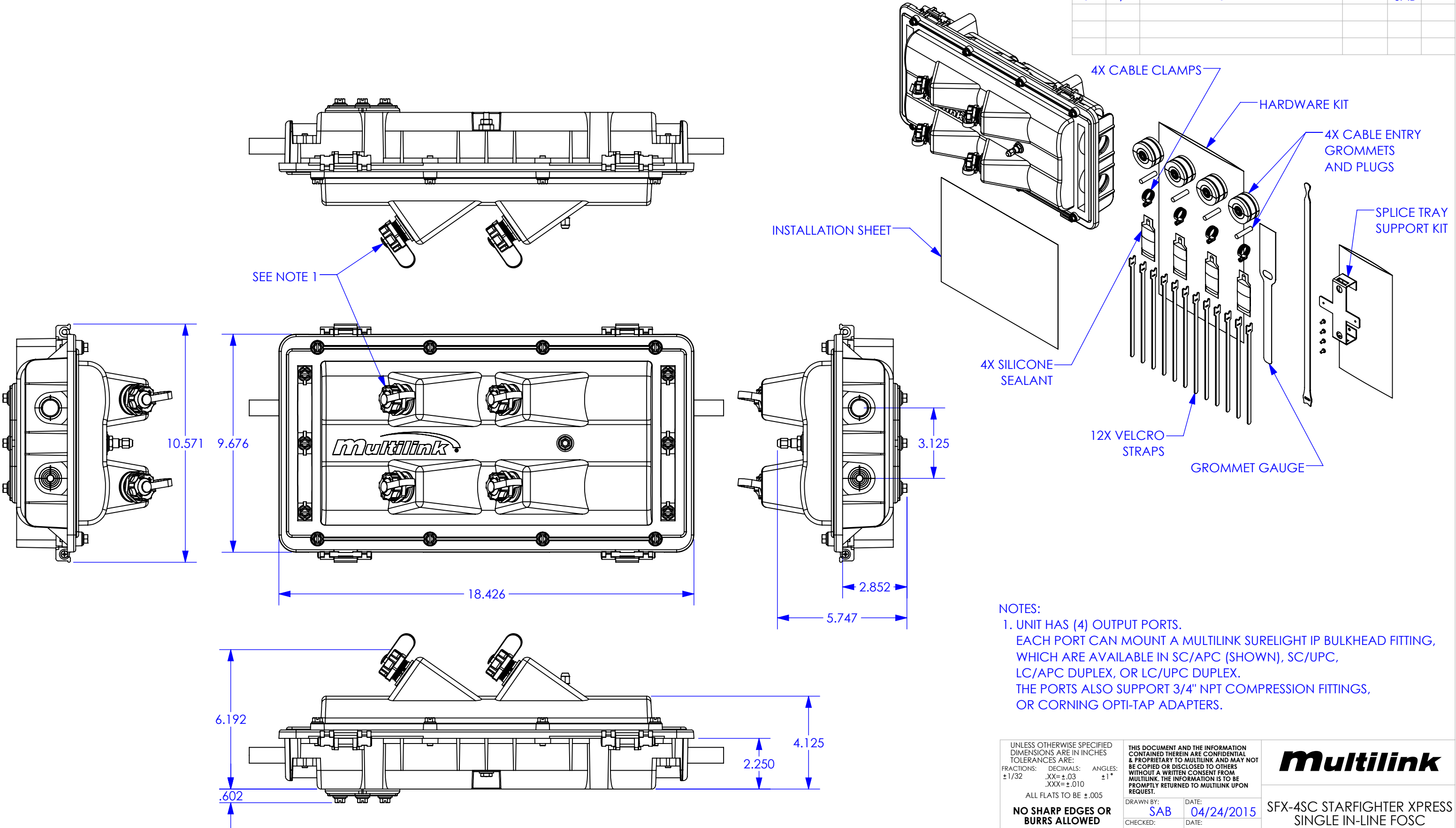


REV.	ECN #	DESCRIPTION OF CHANGE	DATE	BY	MFG ENG
01	N/A	INITIAL RELEASE	04/24/15	SAB	



NOTES:  
1. UNIT HAS (4) OUTPUT PORTS.  
EACH PORT CAN MOUNT A MULTILINK SURELIGHT IP BULKHEAD FITTING, WHICH ARE AVAILABLE IN SC/APC (SHOWN), SC/UPC, LC/APC DUPLEX, OR LC/UPC DUPLEX.  
THE PORTS ALSO SUPPORT 3/4" NPT COMPRESSION FITTINGS, OR CORNING OPTI-TAP ADAPTERS.

UNLESS OTHERWISE SPECIFIED  
DIMENSIONS ARE IN INCHES  
TOLERANCES ARE:  
FRACTIONS: DECIMALS: ANGLES:  
±1/32 .XX=±.03 ±1°  
.XXX=±.010  
ALL FLATS TO BE ±.005

**NO SHARP EDGES OR  
BURRS ALLOWED**

MATERIAL:  
FINISH:  
BLACK

DO NOT SCALE DRAWING

THIS DOCUMENT AND THE INFORMATION  
CONTAINED THEREIN ARE CONFIDENTIAL  
& PROPRIETARY TO MULTILINK AND MAY NOT  
BE COPIED OR DISCLOSED TO OTHERS  
WITHOUT A WRITTEN CONSENT FROM  
MULTILINK. THE INFORMATION IS TO BE  
PROMPTLY RETURNED TO MULTILINK UPON  
REQUEST.

DRAWN BY: **SAB** DATE: **04/24/2015**  
CHECKED: DATE:  
MFG ENG: DATE:  
QUALITY ENG: DATE:

**Multilink**

SFX-4SC STARFIGHTER XPRESS  
SINGLE IN-LINE FOSC

SIZE **B** DWG. NO. **020-235-10REF** REV. **01**  
SCALE: 1:4 CAD FILE: **020-235-10REF** SHEET: 1 OF 4

REV.	ECN #	DESCRIPTION OF CHANGE	DATE	BY	MFG ENG
01	N/A	INITIAL RELEASE	04/24/15	SAB	

WITH BULKHEAD BRACKET  
SPLICE TRAY CAPACITY IS TWO

BULKHEAD BRACKET,  
SHOWN WITH (6) SC DUPLEX  
ADAPTERS. (6) LC QUAD  
ADAPTERS CAN ALSO BE USED.

EXTERNAL 1/4-20  
BRASS GROUND STUD

STAINLESS STEEL/BRASS  
ENCLOSURE HARDWARE

FEEDER CABLE

AIR VALVE

GROUND STUD

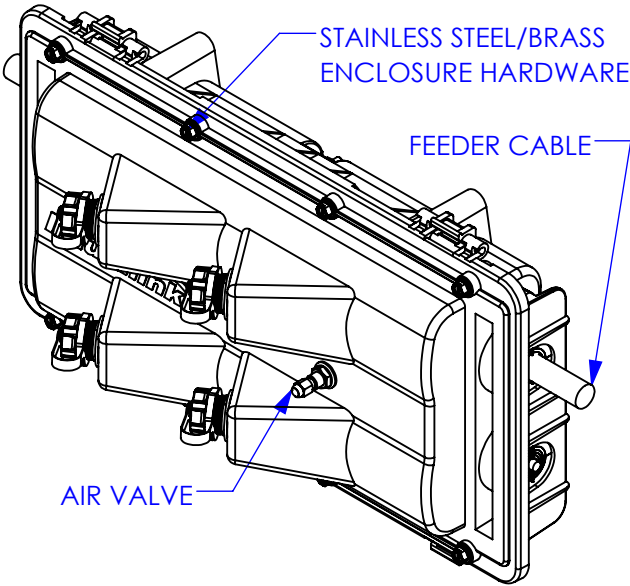
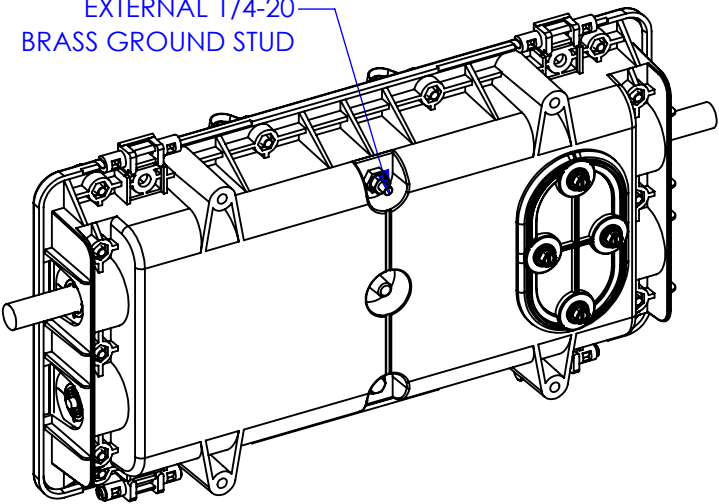
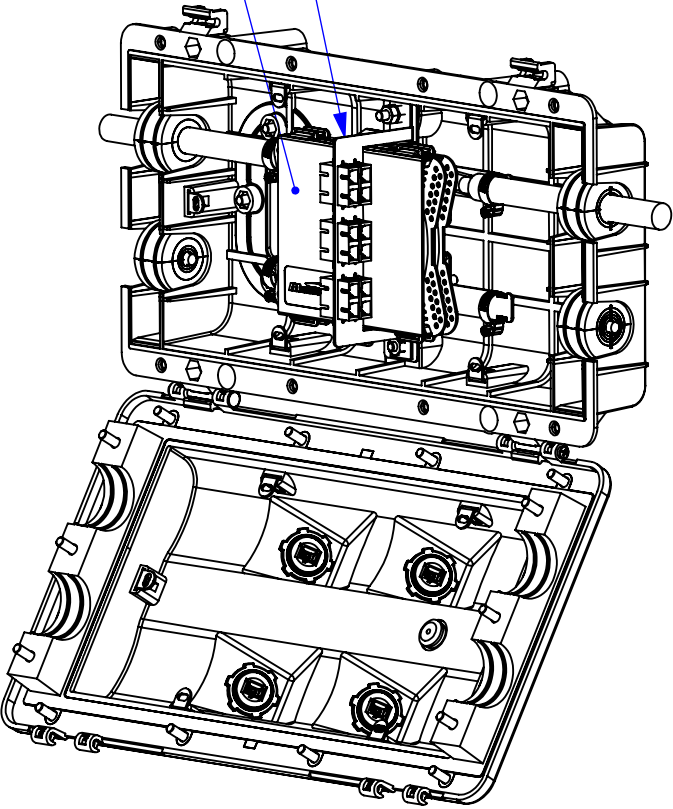
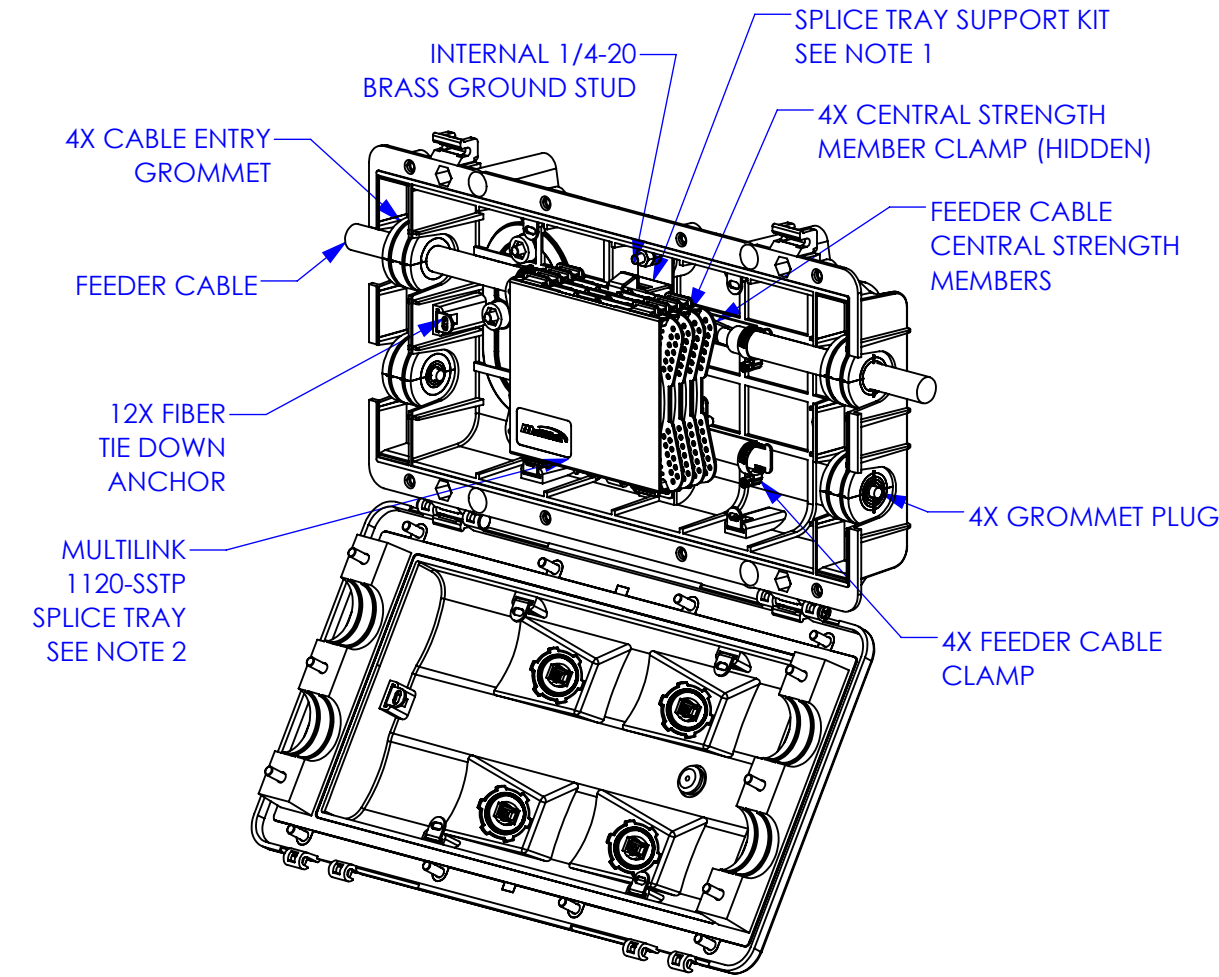
2X LOCK WASHER

2X HEX NUT

LOADED BULKHEAD  
BRACKET, SEE NOTE 3

LOCK NUT

HEX HEAD BOLT



- NOTES:
1. KIT SUPPLIED WITH ENCLOSURE. SPLICE TRAY CAN BE SCREW MOUNTING, OR VELCRO STRAPPED.
  2. SPLICE TRAY CAPACITY IS (4).
  3. BULKHEAD BRACKET ASSEMBLY NOTES:
    - A. REMOVE HEX NUTS, LOCK WASHERS, AND LOCK NUT FROM GROUND STUD AND HEX HEAD BOLT.
    - B. PUT BULKHEAD BRACKET IN PLACE OVER STUD AND BOLT AS SHOWN.
    - C. REPLACE HEX NUTS, LOCK WASHERS, AND LOCK NUT IN ORDER SHOWN.

UNLESS OTHERWISE SPECIFIED  
DIMENSIONS ARE IN INCHES  
TOLERANCES ARE:  
FRACTIONS: DECIMALS: ANGLES:  
± 1/32 .XX = ± .03 ± 1°  
.XXX = ± .010  
ALL FLATS TO BE ± .005  
**NO SHARP EDGES OR  
BURRS ALLOWED**  
MATERIAL: SEE B.O.M.  
FINISH: BLACK  
DO NOT SCALE DRAWING

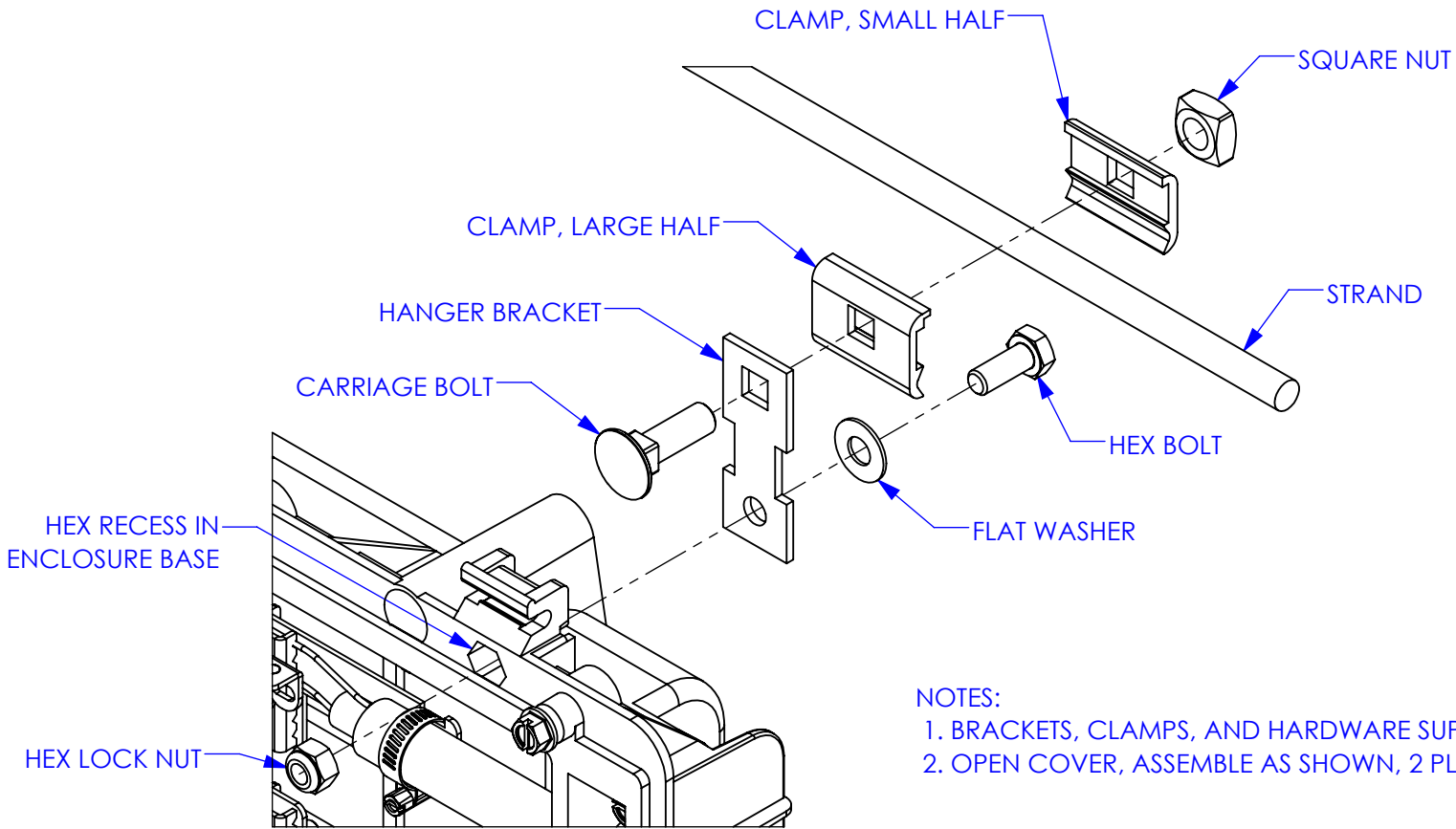
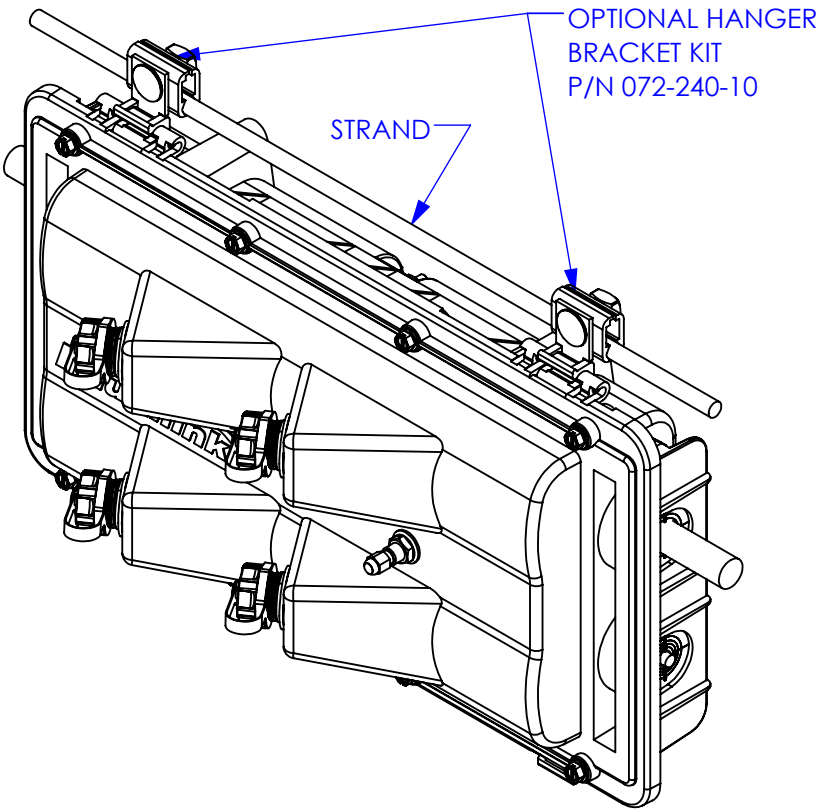
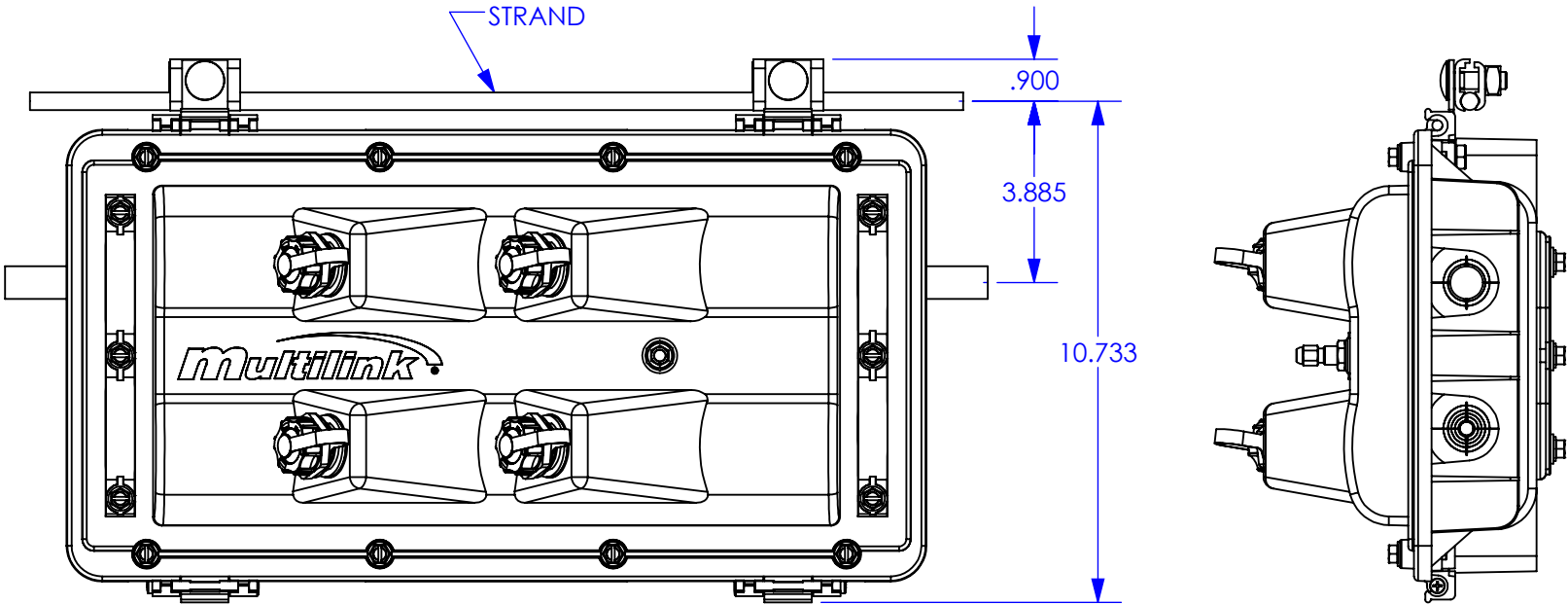
THIS DOCUMENT AND THE INFORMATION  
CONTAINED THEREIN ARE CONFIDENTIAL  
& PROPRIETARY TO MULTILINK AND MAY NOT  
BE COPIED OR DISCLOSED TO OTHERS  
WITHOUT A WRITTEN CONSENT FROM  
MULTILINK. THE INFORMATION IS TO BE  
PROMPTLY RETURNED TO MULTILINK UPON  
REQUEST.  
DRAWN BY: SAB DATE: 04/24/2015  
CHECKED: DATE:  
MFG ENG: DATE:  
QUALITY ENG: DATE:

**Multilink**

SFX-4SC STARFIGHTER XPRESS  
SINGLE IN-LINE FOSC

SIZE B DWG. NO. 020-235-10REF REV. 01  
SCALE: 1:5 CAD FILE: 020-235-10REF SHEET: 2 OF 4

REV.	ECN #	DESCRIPTION OF CHANGE	DATE	BY	MFG ENG
01	N/A	INITIAL RELEASE	04/24/15	SAB	



- NOTES:
- 1. BRACKETS, CLAMPS, AND HARDWARE SUPPLIED IN KIT.
  - 2. OPEN COVER, ASSEMBLE AS SHOWN, 2 PLACES.

UNLESS OTHERWISE SPECIFIED  
DIMENSIONS ARE IN INCHES  
TOLERANCES ARE:  
FRACTIONS: DECIMALS: ANGLES:  
± 1/32 .XX = ± .03 ± 1°  
.XXX = ± .010

ALL FLATS TO BE ± .005

**NO SHARP EDGES OR  
BURRS ALLOWED**

MATERIAL:  
FINISH:  
DO NOT SCALE DRAWING

SEE B.O.M.  
BLACK

THIS DOCUMENT AND THE INFORMATION  
CONTAINED THEREIN ARE CONFIDENTIAL  
& PROPRIETARY TO MULTILINK AND MAY NOT  
BE COPIED OR DISCLOSED TO OTHERS  
WITHOUT A WRITTEN CONSENT FROM  
MULTILINK. THE INFORMATION IS TO BE  
PROMPTLY RETURNED TO MULTILINK UPON  
REQUEST.

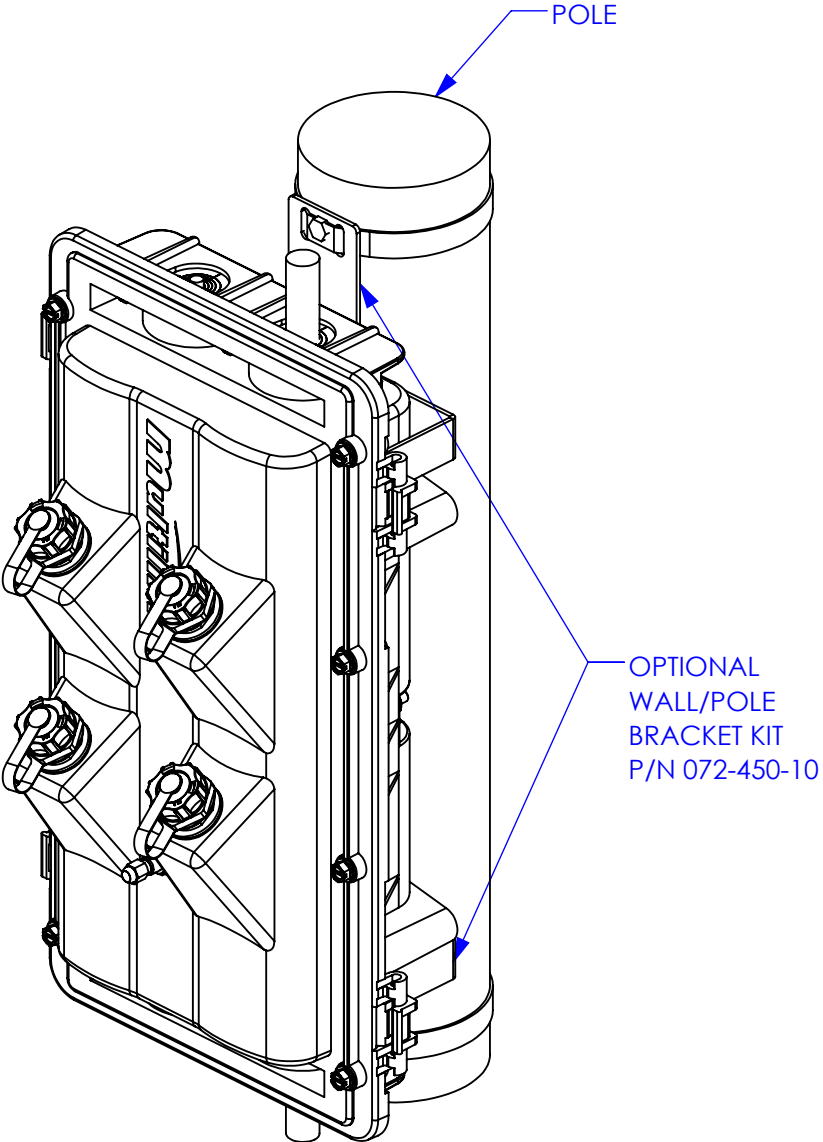
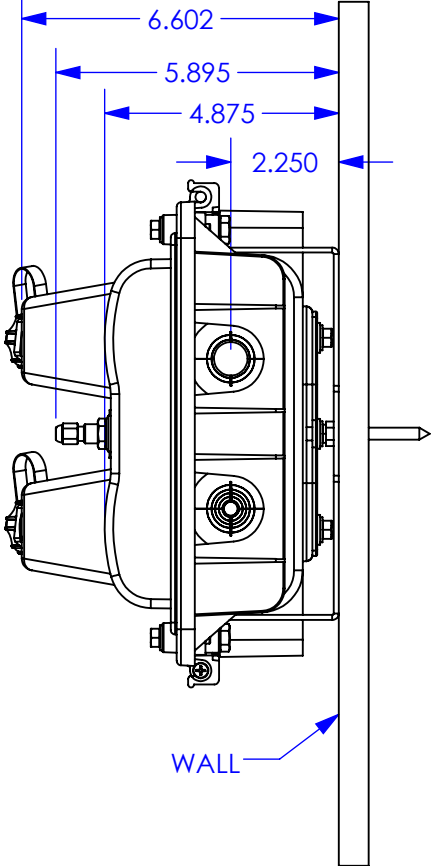
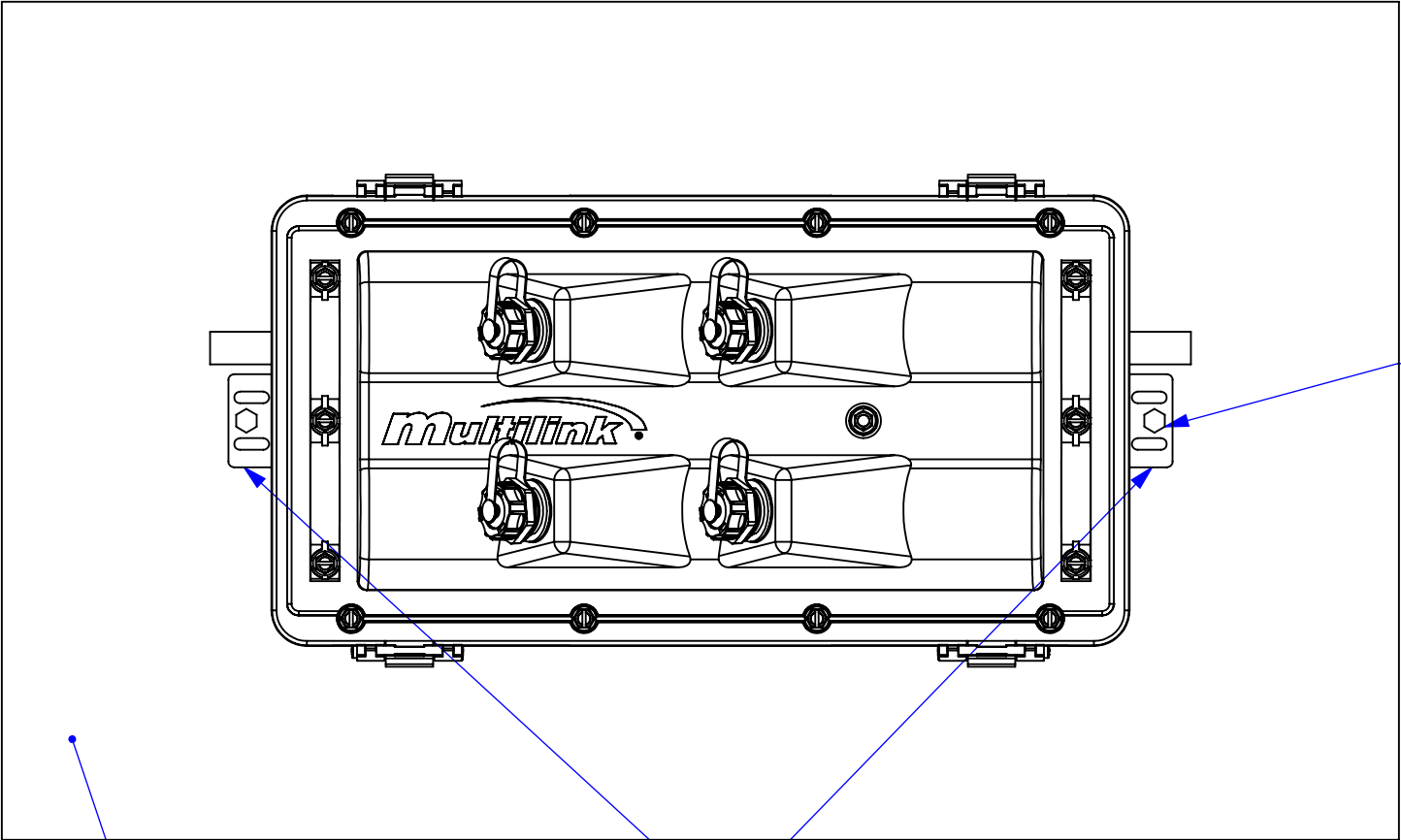
DRAWN BY: **SAB** DATE: **04/24/2015**  
CHECKED: DATE:  
MFG ENG: DATE:  
QUALITY ENG: DATE:

**Multilink**

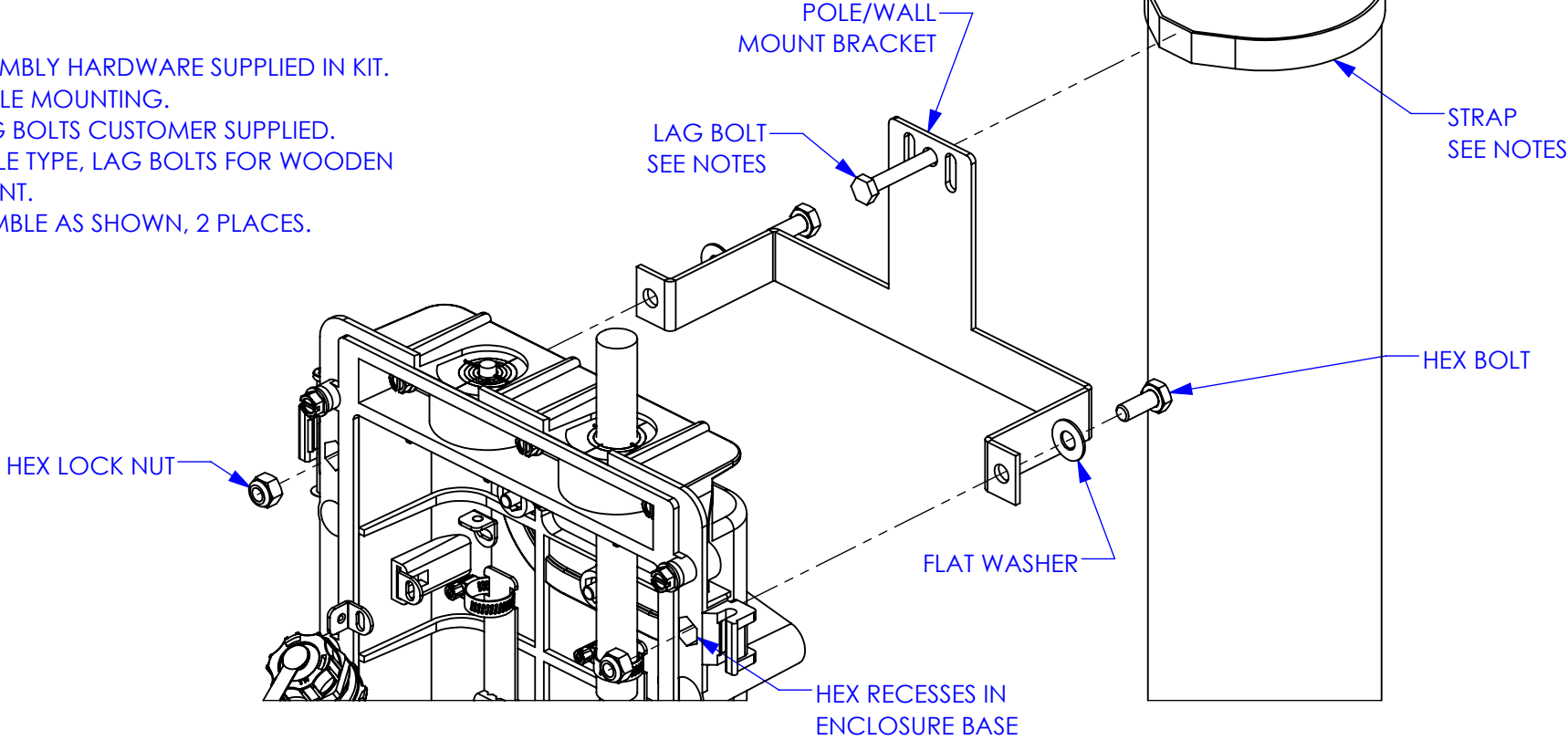
SFX-4SC STARFIGHTER XPRESS  
SINGLE IN-LINE FOSC

SIZE **B** DWG. NO. **020-235-10REF** REV. **01**  
SCALE: 1:4 CAD FILE: **020-235-10REF** SHEET: 3 OF 4

REV.	ECN #	DESCRIPTION OF CHANGE	DATE	BY	MFG ENG
01	N/A	INITIAL RELEASE	04/24/15	SAB	



- NOTES:
- BRACKETS AND ASSEMBLY HARDWARE SUPPLIED IN KIT. KIT FOR WALL OR POLE MOUNTING.
  - STRAPS AND/OR LAG BOLTS CUSTOMER SUPPLIED. STRAPS FOR ANY POLE TYPE, LAG BOLTS FOR WOODEN POLE OR WALL MOUNT.
  - OPEN COVER, ASSEMBLE AS SHOWN, 2 PLACES.



UNLESS OTHERWISE SPECIFIED  
DIMENSIONS ARE IN INCHES  
TOLERANCES ARE:  
FRACTIONS: DECIMALS: ANGLES:  
 $\pm 1/32$  .XX =  $\pm .03$   $\pm 1^\circ$   
.XXX =  $\pm .010$   
ALL FLATS TO BE  $\pm .005$   
**NO SHARP EDGES OR  
BURRS ALLOWED**  
MATERIAL: SEE B.O.M.  
FINISH: BLACK  
DO NOT SCALE DRAWING

THIS DOCUMENT AND THE INFORMATION  
CONTAINED THEREIN ARE CONFIDENTIAL  
& PROPRIETARY TO MULTILINK AND MAY NOT  
BE COPIED OR DISCLOSED TO OTHERS  
WITHOUT A WRITTEN CONSENT FROM  
MULTILINK. THE INFORMATION IS TO BE  
PROMPTLY RETURNED TO MULTILINK UPON  
REQUEST.  
DRAWN BY: SAB DATE: 04/24/2015  
CHECKED: DATE:  
MFG ENG: DATE:  
QUALITY ENG: DATE:

**Multilink**  
SFX-4SC STARFIGHTER XPRESS  
SINGLE IN-LINE FOSC  
SIZE B DWG. NO. 020-235-10REF REV. 01  
SCALE: 1:4 CAD FILE: 020-235-10REF SHEET: 4 OF 4