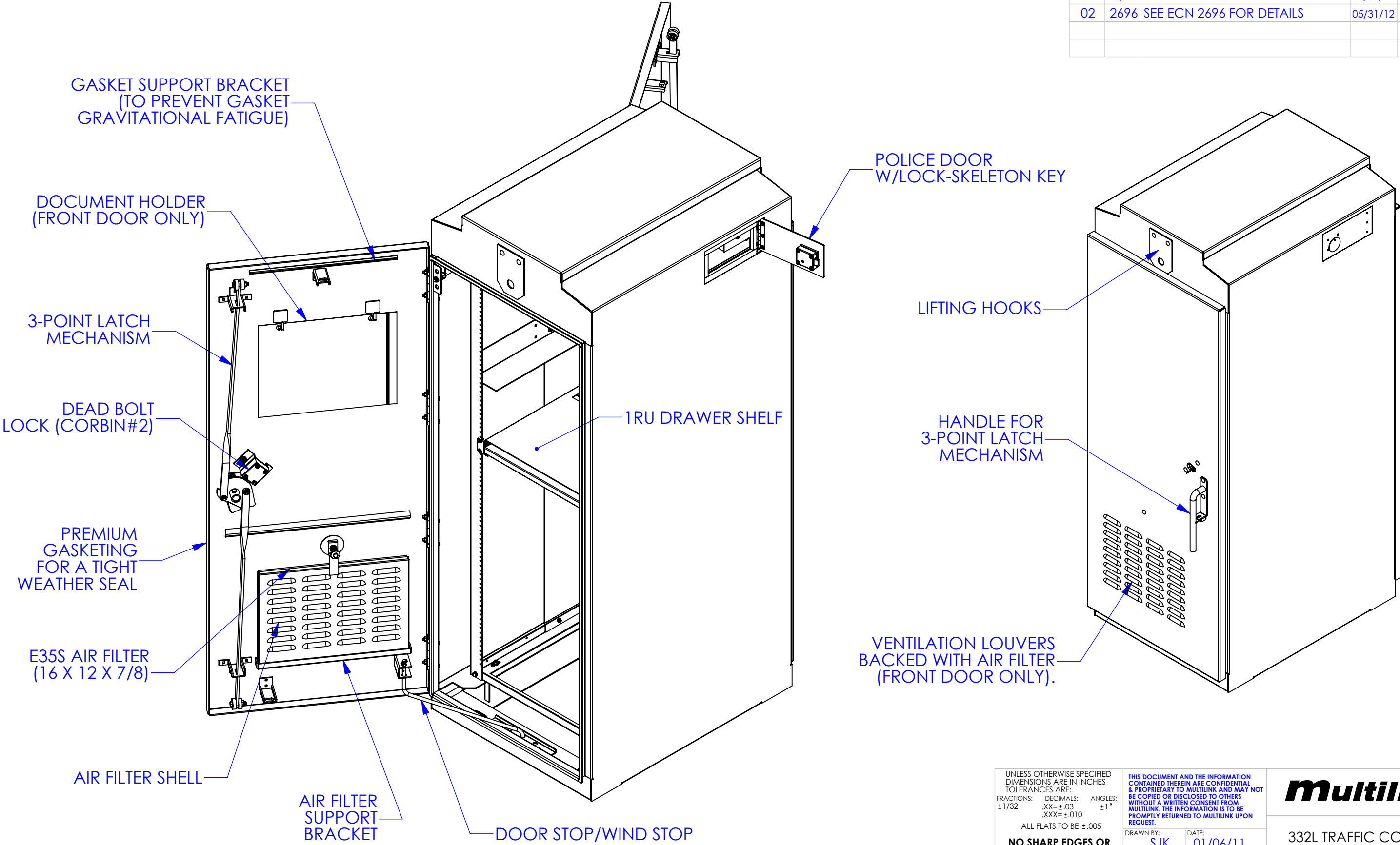


REV.	ECN #	DESCRIPTION OF CHANGE	DATE	BY	MFG ENG
01	N/A	INITIAL RELEASE	01/06/11	SJK	
02	2696	SEE ECN 2696 FOR DETAILS	05/31/12	SJK	



UNLESS OTHERWISE SPECIFIED
DIMENSIONS ARE IN INCHES
TOLERANCES ARE:
FRACTIONS: DECIMALS: ANGLES:
±1/32 .XX=±.03 ±1°
.XXX=±.010

ALL FLATS TO BE ±.005

**NO SHARP EDGES OR
BURRS ALLOWED**

MATERIAL:
SEE B.O.M.

FINISH:
N/A

DO NOT SCALE DRAWING

THIS DOCUMENT AND THE INFORMATION
CONTAINED THEREIN ARE CONFIDENTIAL
& PROPRIETARY TO MULTILINK AND MAY NOT
BE COPIED OR DISCLOSED TO OTHERS
WITHOUT A WRITTEN CONSENT FROM
MULTILINK. THE INFORMATION IS TO BE
PROMPTLY RETURNED TO MULTILINK UPON
REQUEST.

DRAWN BY: SJK DATE: 01/06/11

CHECKED: DATE:

MFG ENG: DATE:

QUALITY ENG: DATE:

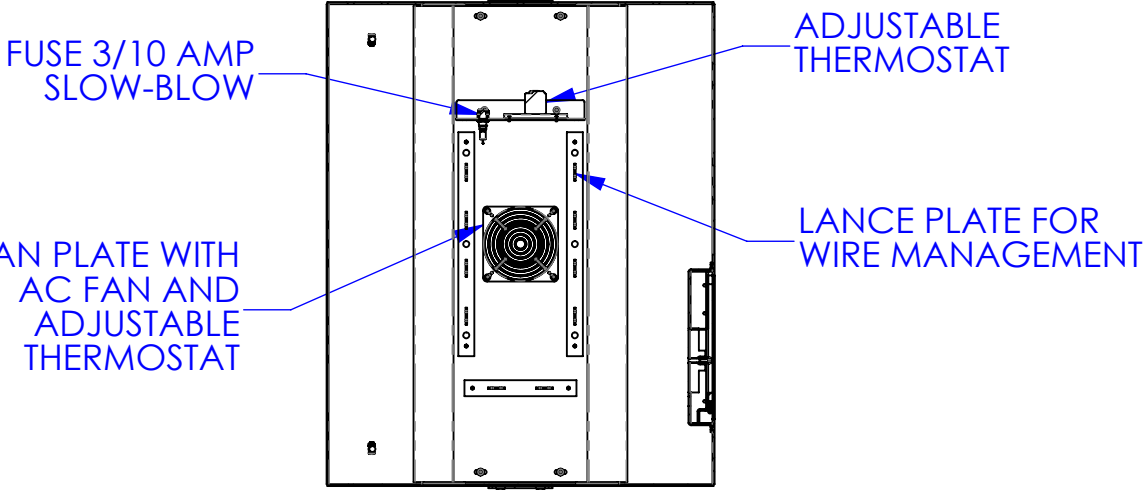
Multilink

332L TRAFFIC CONTROL
CABINET-CALTRANS

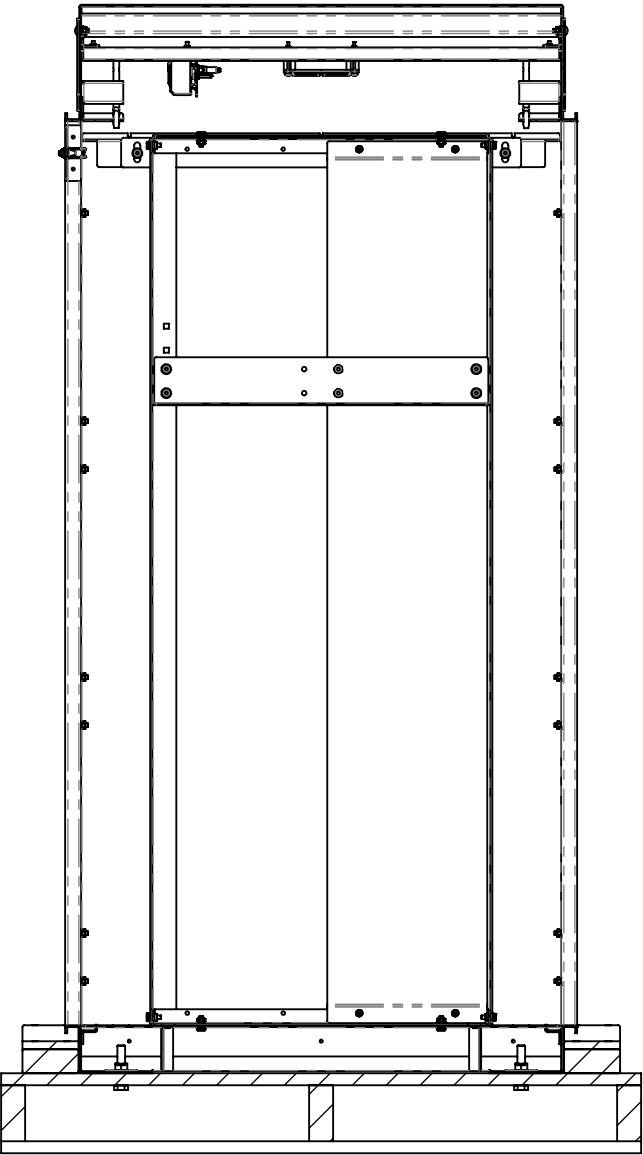
SIZE **B** DWG. NO. 030-222-10-REF REV. 02

SCALE: 1:24 CAD FILE: 030-222-10-REF SHEET: 1 OF 3

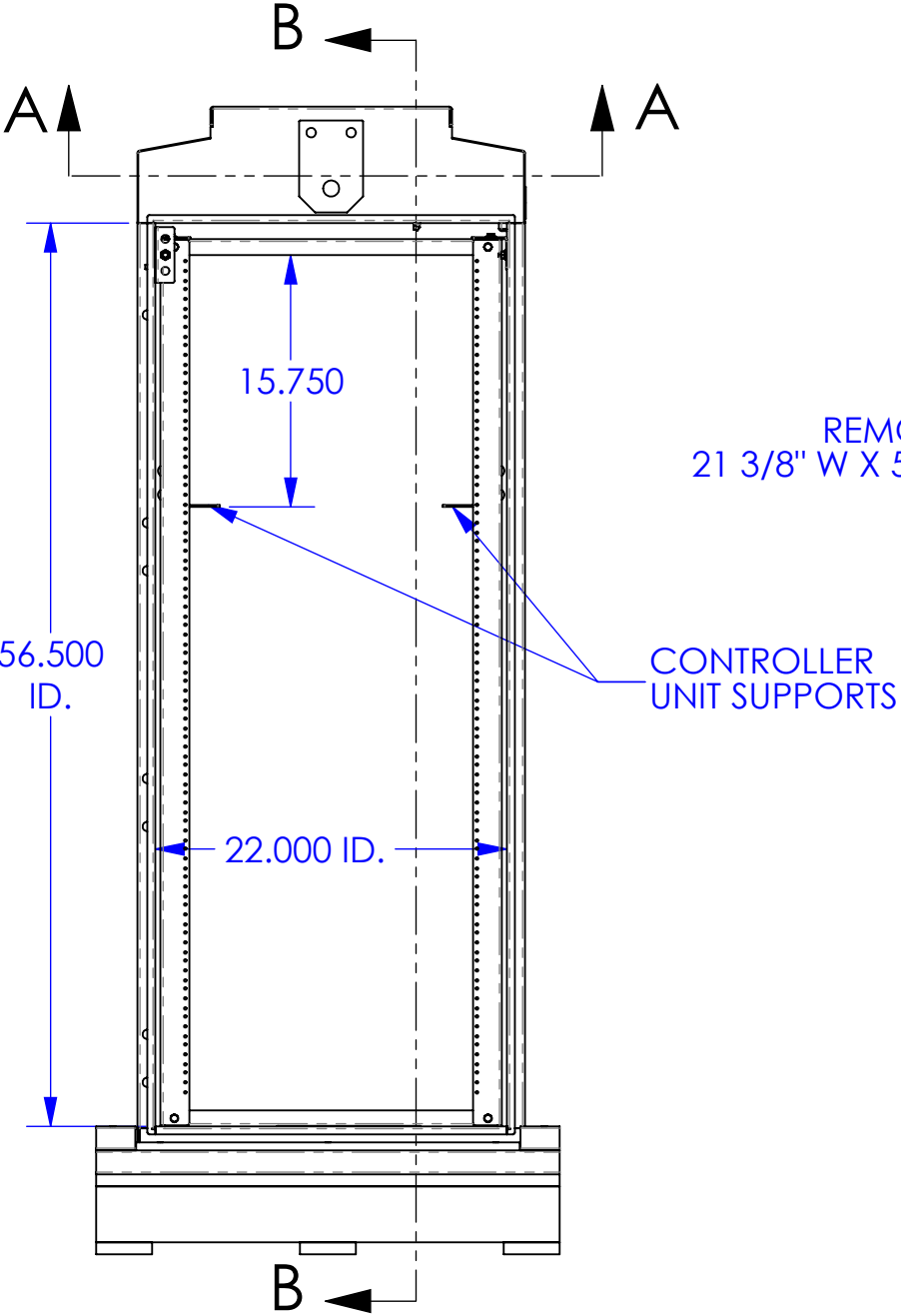
REV.	ECN #	DESCRIPTION OF CHANGE	DATE	BY	MFG ENG
01	N/A	INITIAL RELEASE	01/06/11	SJK	
02	2696	SEE ECN 2696 FOR DETAILS	05/31/12	SJK	



SECTION A-A
SCALE 1 : 12



SECTION B-B

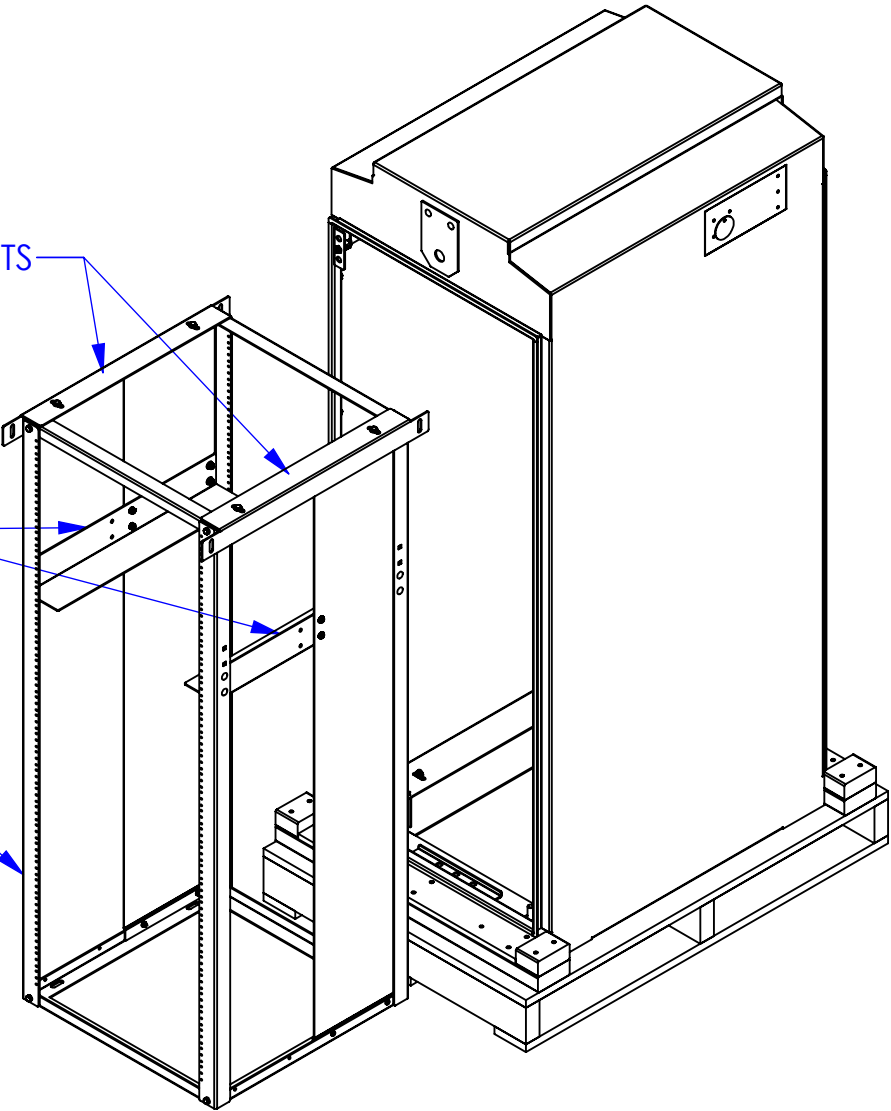


REMOVABLE RACK RAIL
21 3/8" W X 55 1/2" H X 21 3/8"D

SPACER BRACKETS

CONTROLLER
UNIT SUPPORTS

CONTROLLER
UNIT SUPPORTS



UNLESS OTHERWISE SPECIFIED
DIMENSIONS ARE IN INCHES
TOLERANCES ARE:

FRACTIONS: ± 1/32	DECIMALS: .XX = ± .03 .XXX = ± .010	ANGLES: ± 1°
----------------------	---	-----------------

ALL FLATS TO BE ± .005

**NO SHARP EDGES OR
BURRS ALLOWED**

MATERIAL:
SEE B.O.M.

FINISH:
N/A

DO NOT SCALE DRAWING

THIS DOCUMENT AND THE INFORMATION
CONTAINED THEREIN ARE CONFIDENTIAL
& PROPRIETARY TO MULTILINK AND MAY NOT
BE COPIED OR DISCLOSED TO OTHERS
WITHOUT A WRITTEN CONSENT FROM
MULTILINK. THE INFORMATION IS TO BE
PROMPTLY RETURNED TO MULTILINK UPON
REQUEST.

DRAWN BY: SJK	DATE: 01/06/11
CHECKED:	DATE:
MFG ENG:	DATE:
QUALITY ENG:	DATE:

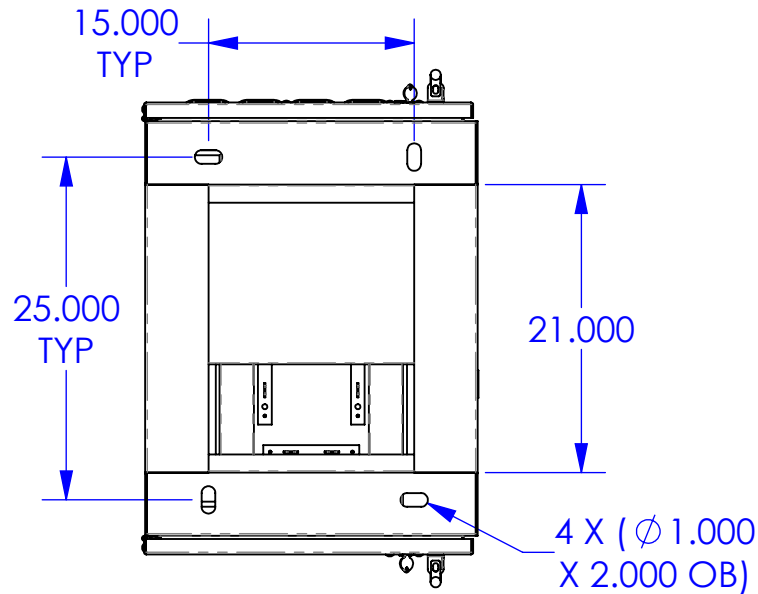
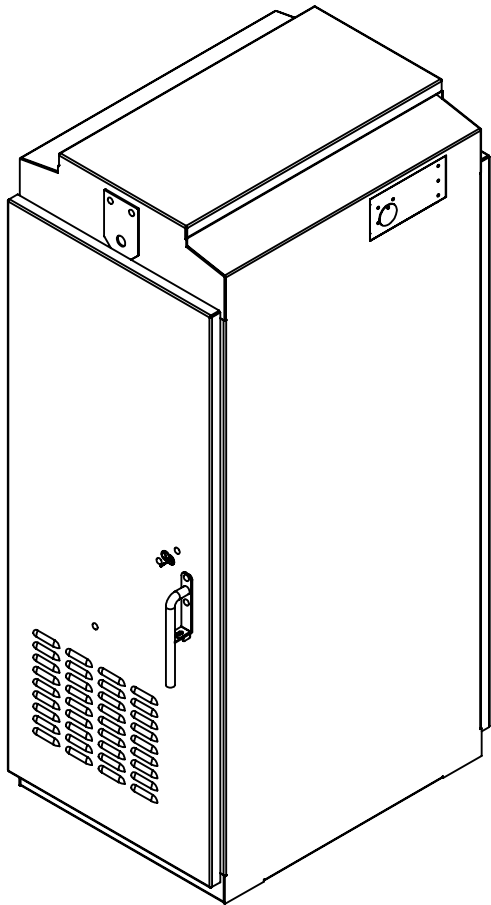
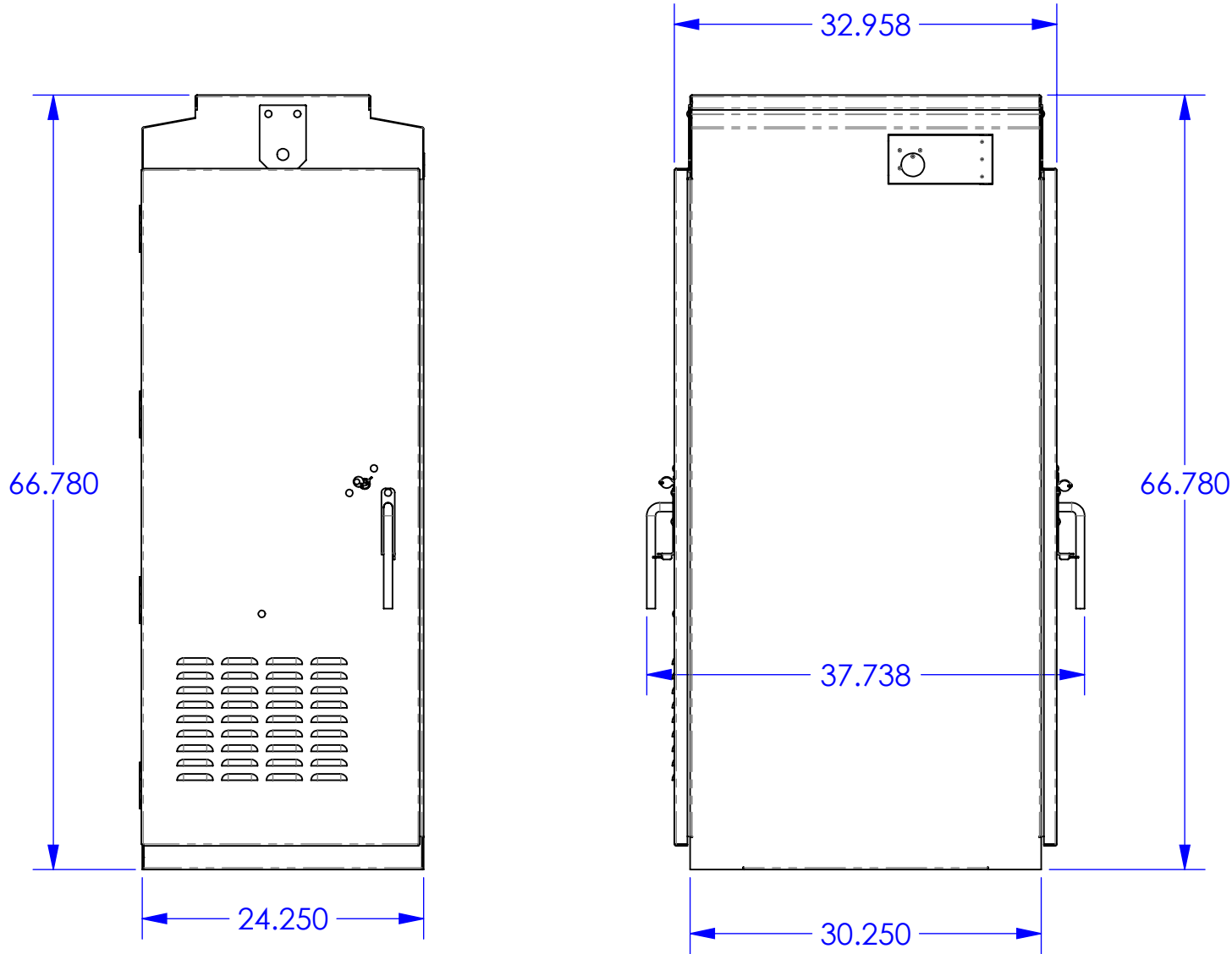
Multilink

332L TRAFFIC CONTROL
CABINET-CALTRANS

SIZE B	DWG. NO. 030-222-10-REF	REV. 02
------------------	----------------------------	-------------------

SCALE: 1:12 CAD FILE: 030-222-10-REF SHEET: 2 OF 3

REV.	ECN #	DESCRIPTION OF CHANGE	DATE	BY	MFG ENG
01	N/A	INITIAL RELEASE	01/06/11	SJK	
02	2696	SEE ECN 2696 FOR DETAILS	05/31/12	SJK	



- NOTE:
- ALL PARTS THAT ARE WELDED TO THE ENCLOSURE AND DOORS ARE OF 0.125" MIN. THICKNESS.
 - ALL EXTERIOR ALUMINUM SURFACES ARE COATED WITH ANODIC COATING.

UNLESS OTHERWISE SPECIFIED
DIMENSIONS ARE IN INCHES
TOLERANCES ARE:
FRACTIONS: DECIMALS: ANGLES:
 $\pm 1/32$.XX = $\pm .03$ $\pm 1^\circ$
.XXX = $\pm .010$
ALL FLATS TO BE $\pm .005$
**NO SHARP EDGES OR
BURRS ALLOWED**
MATERIAL:
FINISH:
DO NOT SCALE DRAWING

SEE B.O.M.
N/A

THIS DOCUMENT AND THE INFORMATION
CONTAINED THEREIN ARE CONFIDENTIAL
& PROPRIETARY TO MULTILINK AND MAY NOT
BE COPIED OR DISCLOSED TO OTHERS
WITHOUT A WRITTEN CONSENT FROM
MULTILINK. THE INFORMATION IS TO BE
PROMPTLY RETURNED TO MULTILINK UPON
REQUEST.

DRAWN BY: SJK DATE: 01/06/11
CHECKED: DATE:
MFG ENG: DATE:
QUALITY ENG: DATE:

Multilink

332L TRAFFIC CONTROL
CABINET-CALTRANS

SIZE **B** DWG. NO. 030-222-10-REF REV. **02**
SCALE: 1:14 CAD FILE: 030-222-10-REF SHEET: 3 OF 3