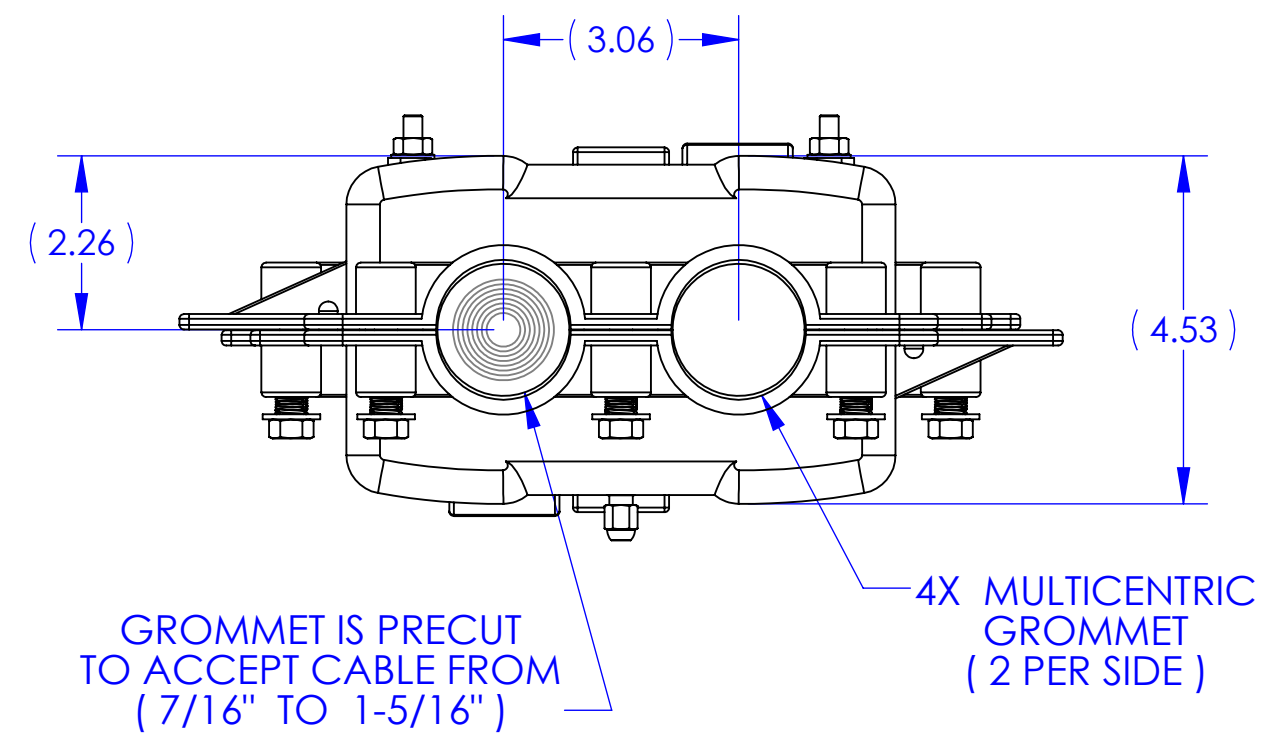
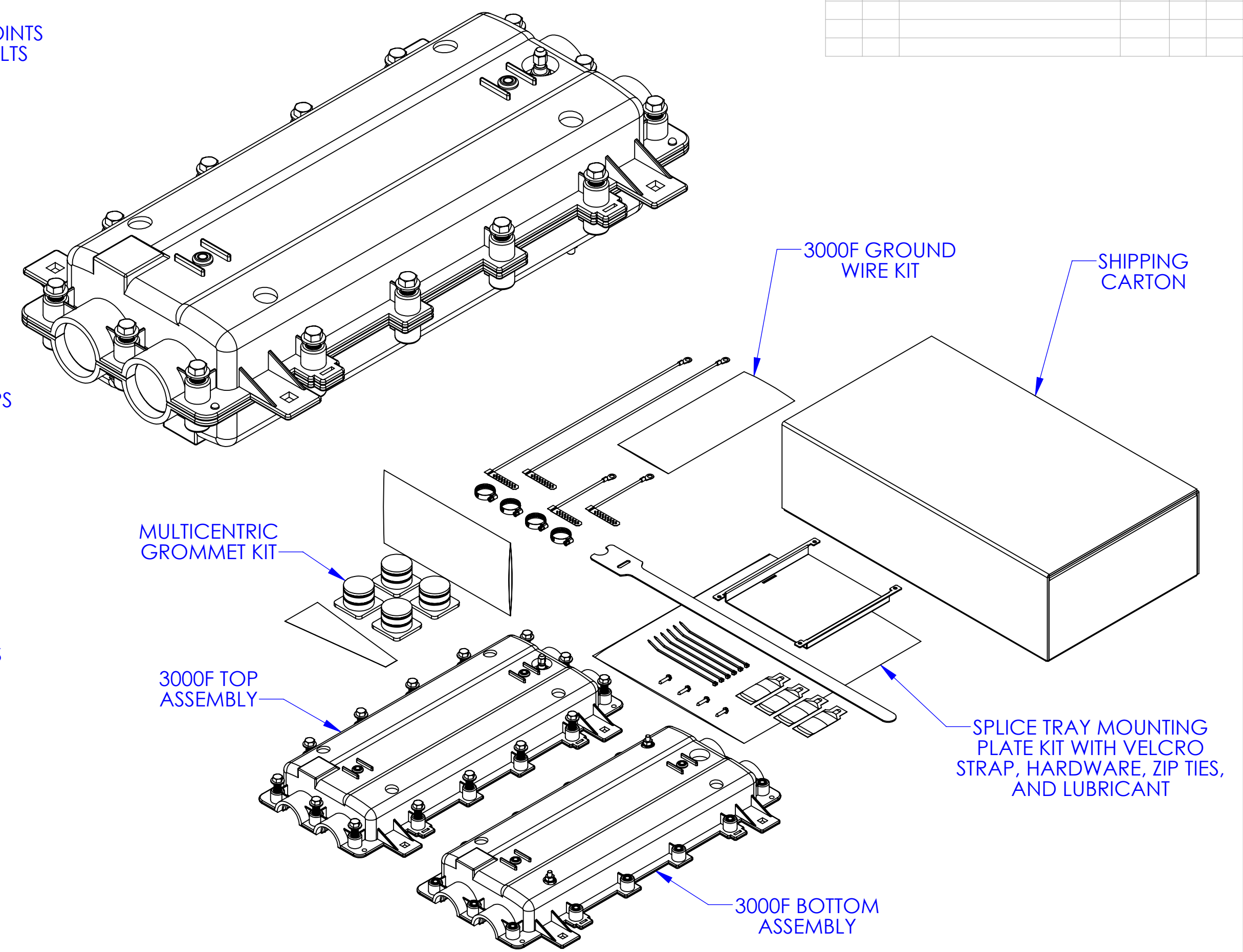
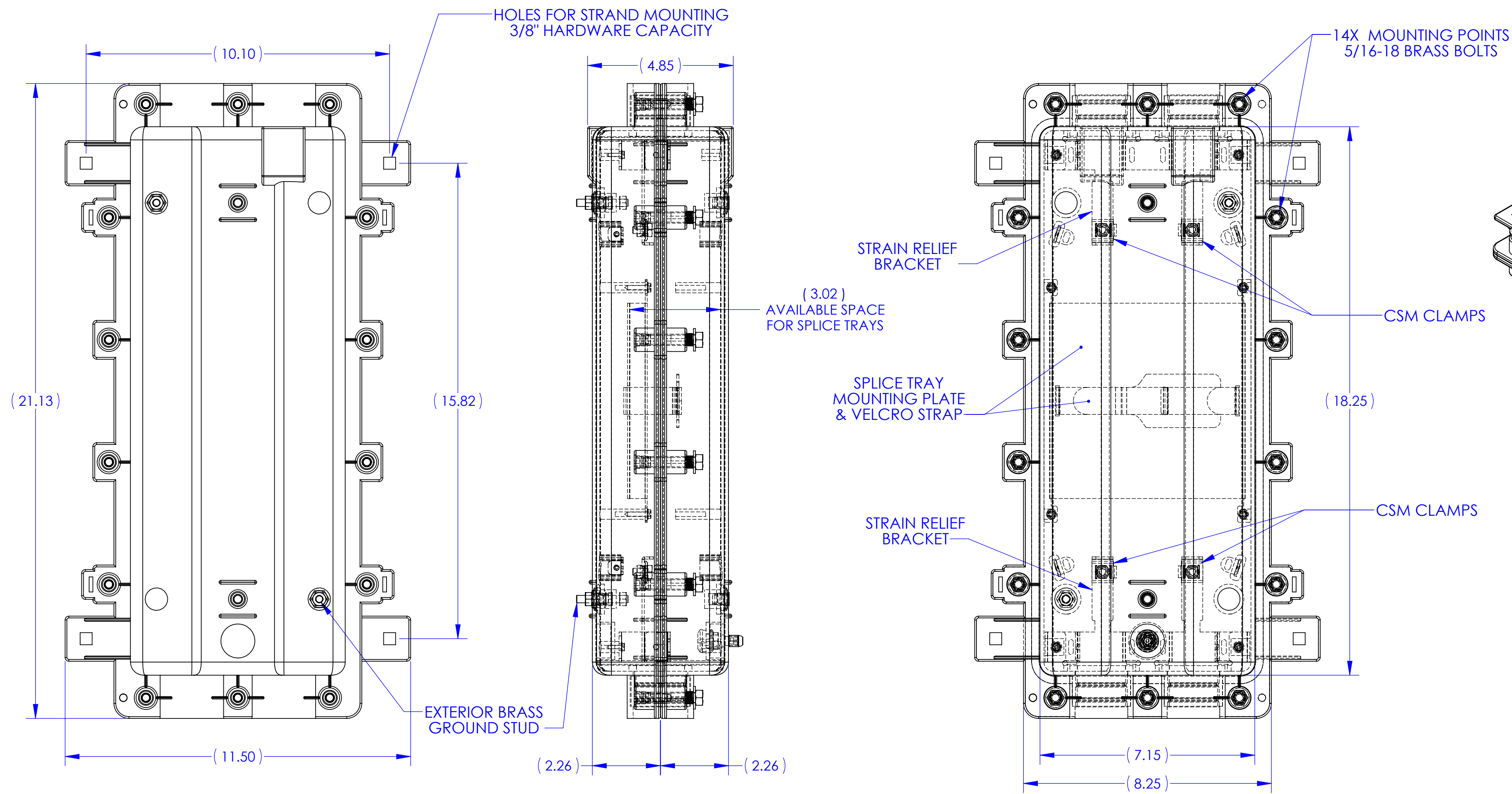
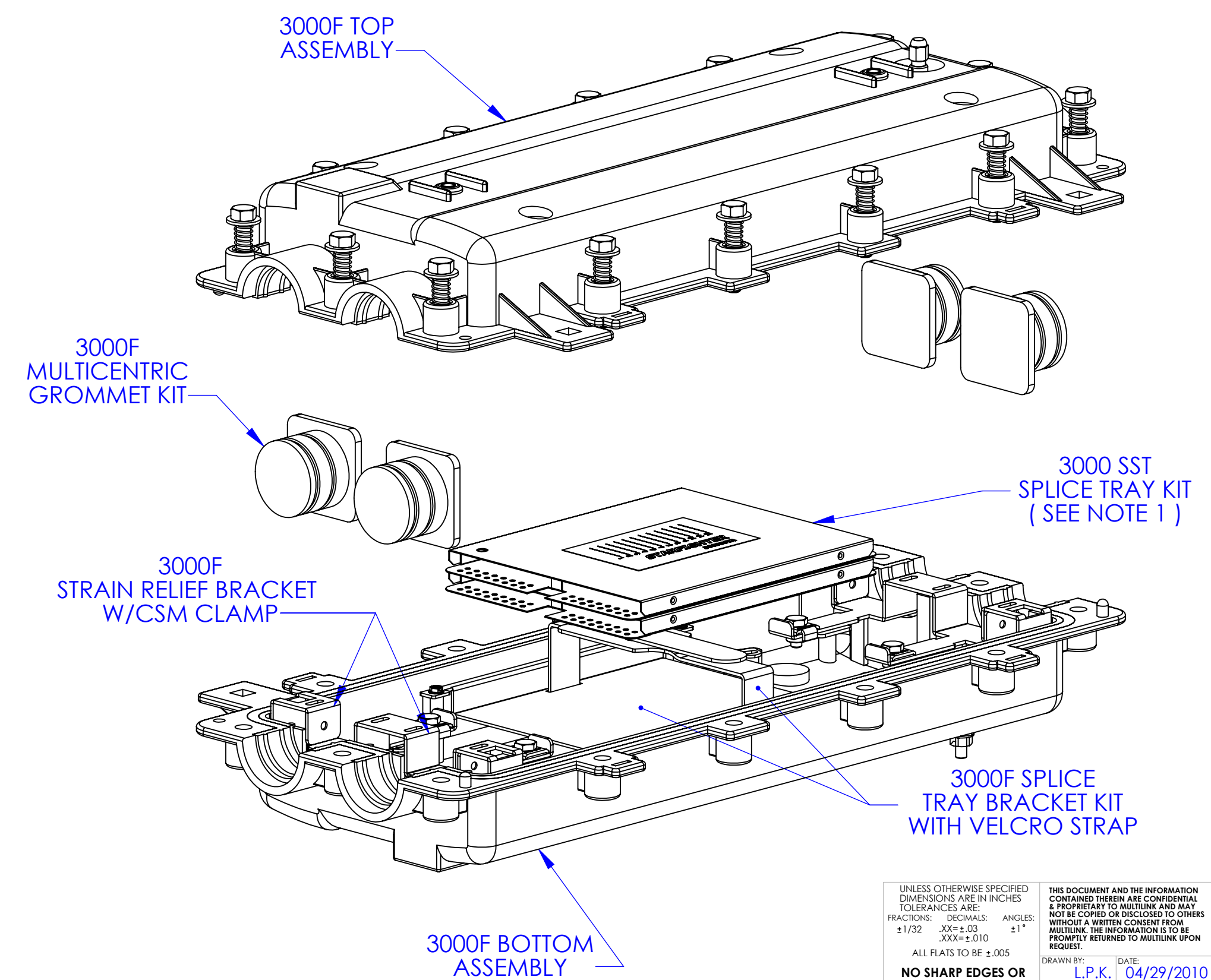
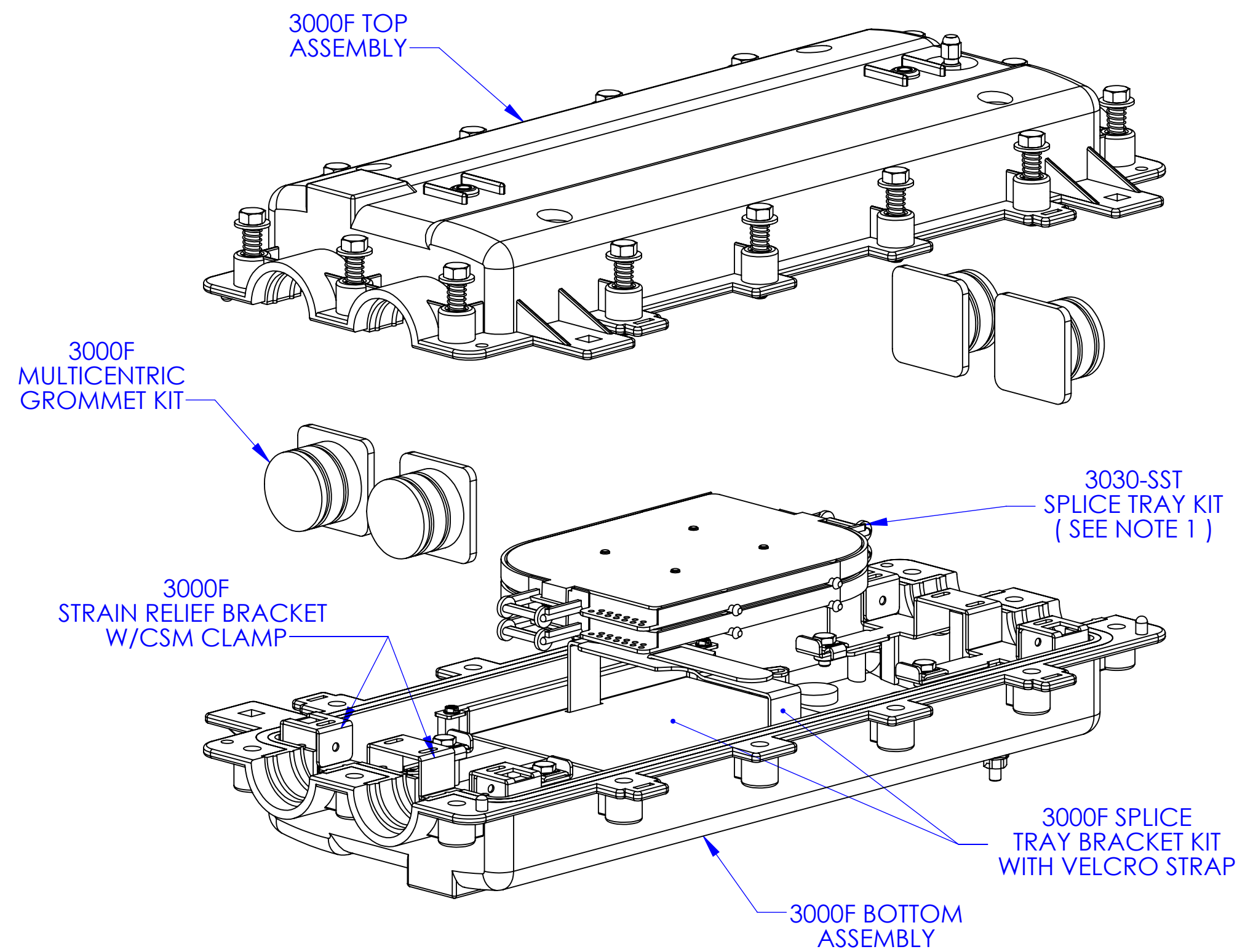


REV.		ECH #	DESCRIPTION OF CHANGE	DATE	BY	MFG
03	N/A	CONVERTED TO SOLIDWORKS	04/29/10	L.P.K.		ENG
70575K-REF						



NOTE:

1. SPLICE TRAY MOUNTING PLATE IS SIZED TO ACCEPT BOTH THE 3030-SST PLASTIC SPLICE TRAYS & THE 3000-SST ALUMINUM SPLICE TRAYS.
2. ALL SPLICE TRAYS ARE NOT STANDARD IN THE 3000F SPLICE CASE AND SHOULD BE ORDERED SEPARATELY.



UNLESS OTHERWISE SPECIFIED DIMENSIONS ARE IN INCHES TOLERANCES ARE: FRACTIONS: DECIMALS: ANGLES: ±1/32 ±.005 ±1° ALL FLATS TO BE ±.005		THIS DOCUMENT AND THE INFORMATION CONTAINED THEREIN ARE CONFIDENTIAL PROPERTY OF MULTILINK. IT IS TO BE CONTROLLED, THE INFORMATION IS TO BE PROTECTED, AND IT IS TO BE RETURNED TO MULTILINK UPON REQUEST.		DRAWN BY: L.P.K. DATE: 04/29/2010	
NO SHARP EDGES OR BURRS ALLOWED		CHECKED: DATE:		DATE:	
MATERIAL: SEE B.O.M.		MFG ENG: DATE:		DATE:	
FINISH: N/A		QUALITY ENG: DATE:		DATE:	
DO NOT SCALE DRAWING		SCALE: 1:2.5		DWG. NO. 70575K-REF	
		FILE: 70575K-REF		SHEET: 1 OF 1	

Multilink

3000-F STAR-FTR  
SPLICE CASE 144CT  
W/UNIV GROMMET

REV. 03