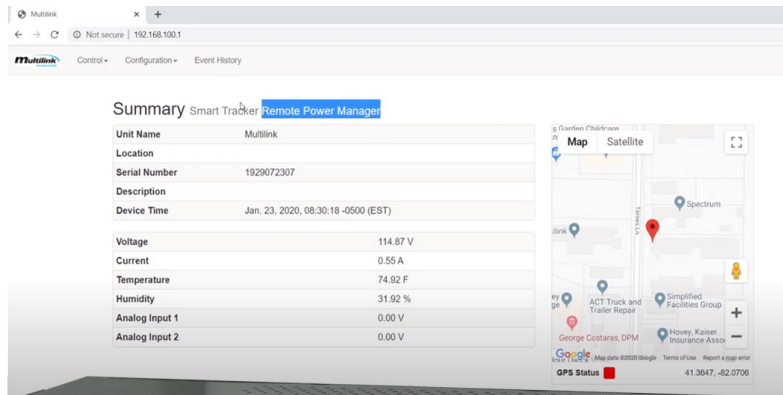


Smart Tracker Remote Power Manager

018-041-10



018-041-11 shown



Product Description

With remote deployment and use in Department of Transportation and Intelligent Traffic Systems in mind, the Smart Tracker Remote Power Manager is designed to provide 8 resettable outlets for any piece of equipment that may be attached to the Smart Tracker.

Each Smart Tracker is Ethernet ready and provides up-to-date operating parameters through an on board webpage. With the click of a button, the user can reset a remote device without the need to issue a technician to the site for manual resetting and can schedule devices on each outlet to turn off/on at specific time intervals.

8 digital output relays and 8 digital inputs, provide multi-purpose use to conflict monitoring equipment and/or additional reporting to the network operations center. Built-in analog DC voltage inputs provide battery voltage readings and built-in temperature and humidity sensors provide environmental parameters. With GPS tracking you will know the exact location of each Smart Tracker deployed in your system.

The Smart Tracker Power Manager can provide event logs for each event that takes place on its outlets, digital inputs, or outputs. The Smart Tracker is your final solution to remote equipment deployment.

Specifications

General Specifications

Parameter	Specification
No. Outlets:	8 Individually Controlled Outlets
Outlet Type:	NEMA 5-15R, 15A/125 VAC, 60Hz
User Input:	Pushbutton for Specific Actions
LEDs:	Indicators for Active Outlets, Relays, and Digital Inputs
LCD:	Dual Line 2x20 Backlit
Embedded Webpage:	Password Protected User Interface
Event Log:	Stores Thousands of Events
Automation:	Scheduled Events and Actions
Remote Updates:	Firmware and Unit Configuration
System Clock:	NTP/RTC/Manual Update

Mechanical Specifications

Parameter	Specification
Dimensions:	1.7"H x 7.0"D x 19"W (43mm x 482mm x 178mm)
Weight:	5 Lbs.(2.26 Kg)
Color:	Blue
Mounting:	1RU Rack Mounting w/ Adjustable Rack Mount Brackets or Shelf Mount
Relay and Input Connections:	Screw Terminal Plugs for 12-22AWG Wire

Digital Input Specifications

Parameter	Specification
No. Digital Inputs:	8 Individual Inputs (2 Contacts per Input)
Digital Input Voltage:	5VDC, 10mA Max., Opto-isolated Inputs
Analog Voltage (DC) Input:	2 Independent DC Measurement Inputs
Analog Input Voltage (DC):	0-60VDC
Temperature Sensor:	Embedded
Humidity Sensor:	Embedded

Output Relay Specifications

Parameter	Specification
No. Output Relays:	8 Individual Output Relays
Relay Switching Voltage:	250VAC, 125VDC MAX
Relay Current Capacity:	10 Amps, Each

AC Input Specifications

Parameter	Specification
Voltage Range:	85-154VAC; 120VAC Nominal
Frequency:	60Hz ±3Hz
Circuit Breaker Rating:	15A
Current Capacity:	15A
Power Cord:	Pluggable 5-15P, C13 15A/125VAC

Environmental Specifications

Parameter	Specification
Operating Temperature:	-37°C to +74°C (-34°F to 165°F)
Operating Humidity:	5-95% Non-condensing
Storage Temperature:	-45°C to 85°C (-49°F to 185°F)

Communication Specifications

Parameter	Specification
Network Interface:	10/100/1000 BASE-T Ethernet Port, RJ45 Connection, Auto MDI-x
Network Protocols:	NTCIP/TCP/IP/HTTP/SNMP/SNTP/UDP
IP Addressing:	DCHP and Static IP Addressing
Notification Type:	SNMP Traps/Email Notification

Safety Standard Specifications

Parameter	Specification
Standards:	NEMA TS2-2016 v03.07

Multilink®

Simply More...



Multilink Inc.
580 Ternes Ln
Elyria, OH 44035
Tel: (440) 366-6966
Fax: (440) 366-6802



facebook.com/GoMultilink1



twitter.com/GoMultilink



youtube.com/GoMultilink

© Multilink Inc. 2022 • All Rights Reserved