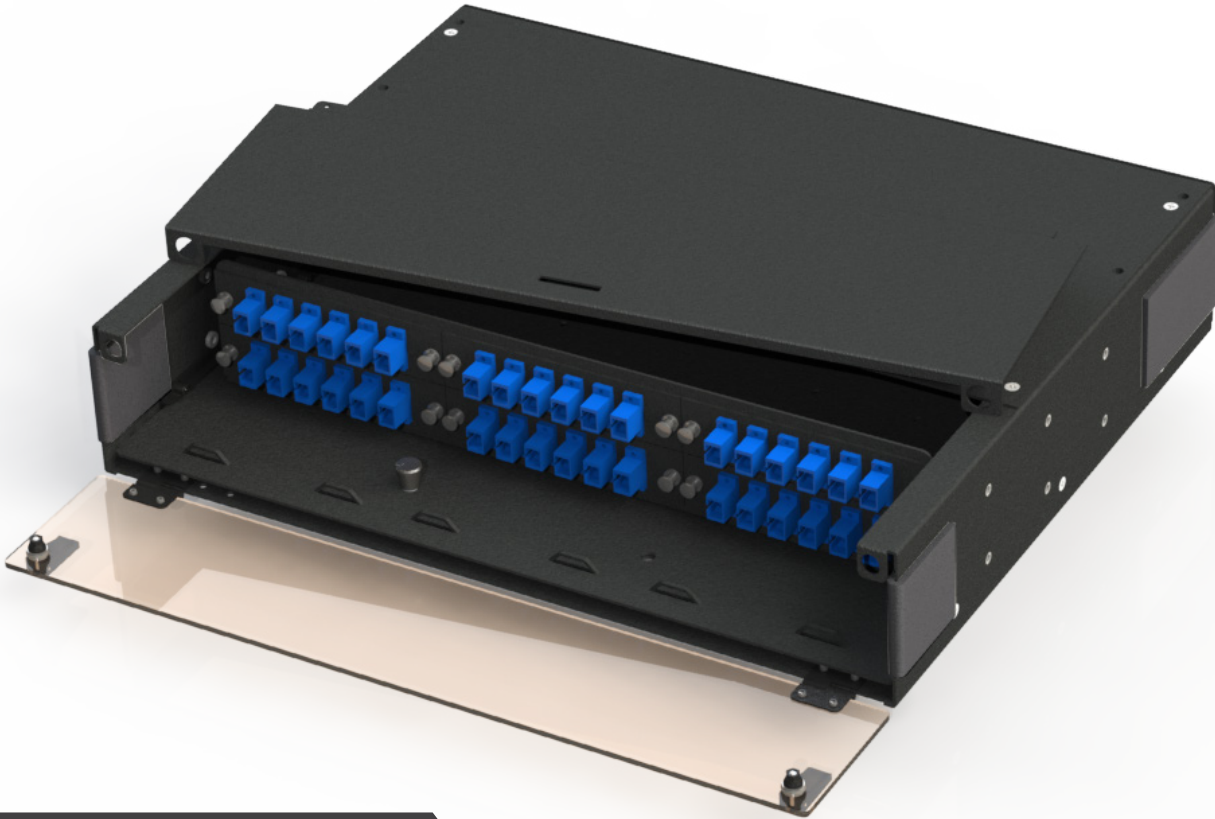


FRM-2RU-6X-TS-S



Product Description

The Multilink FRM-2RU-6X-TS-S is a 2 Rack Unit (2RU), 6 termination panel, 19" and 23" rack mount fiber distribution unit designed to support patching and splicing in one unit. The unit has a slide out master panel with an integrated tray stop to prevent overextension of fiber cables. The unit also has a two-piece top and swell latch door to allow for easy access to the adapter panels. The FRM-2RU-6X-TS-S is one of a family of units that support fiber terminations in rack mount applications. **This product must be installed in accordance with all codes applicable to the location of the installation and in accordance with the instructions for use.**

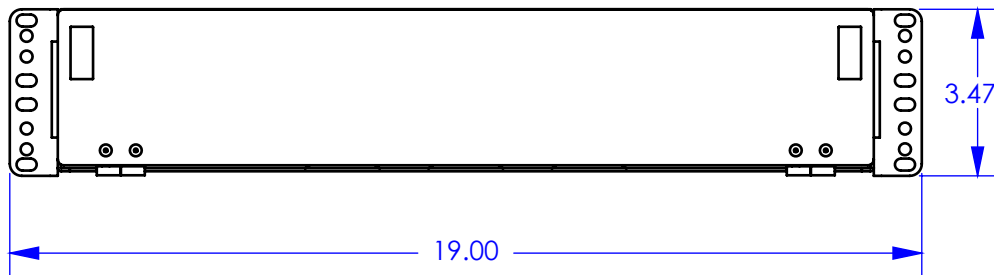
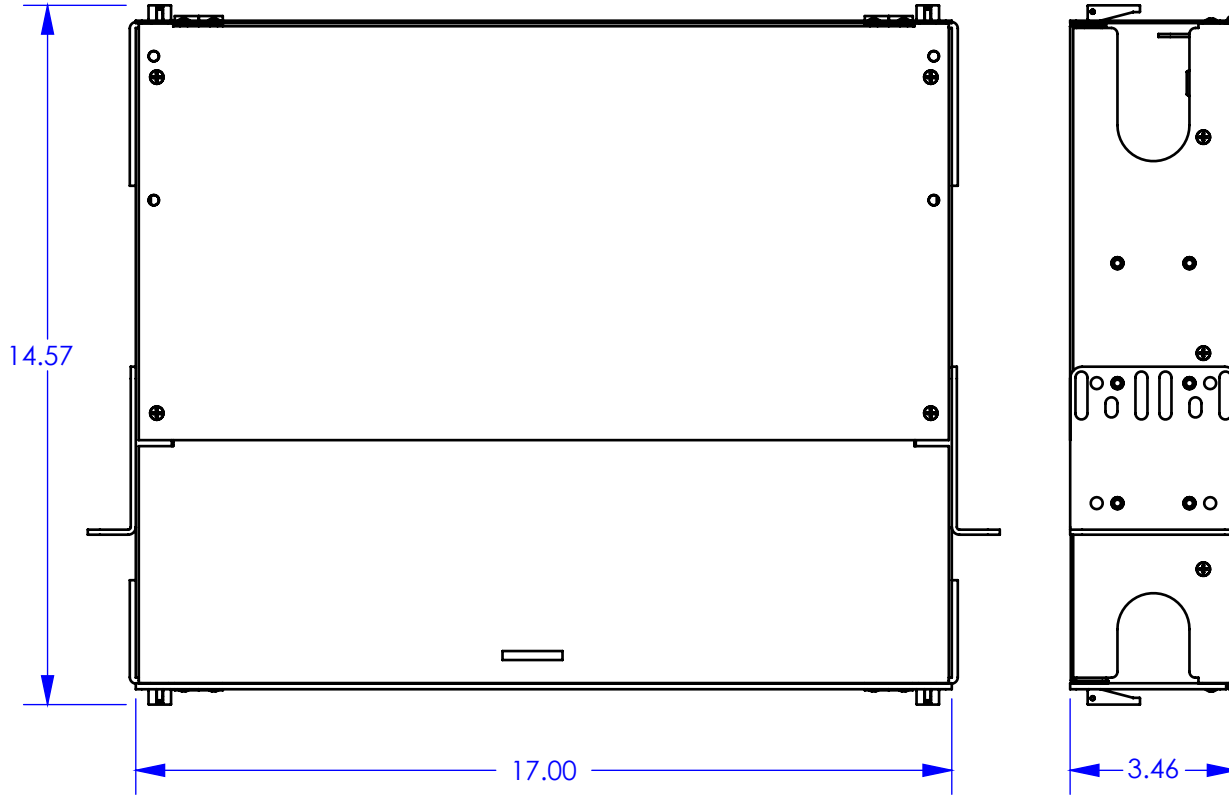
General Specifications

Dimensions:	3.47" H x 17.0" W x 14.57" D
Panels:	(6) Multilink Adapter Panels (see individual panel capacities)
Splice Trays:	(3) 2000-SSTA (24 single splices per tray)
Material:	Aluminum
Coating:	Electrostatic polyester powder coat paint, available in Black or Off White

Ordering Information

Stock ID	Description
045-798-10	FRM-2RU-6X-TS-S (Black)
045-798-11	FRM-2RU-6X-TS-S (Off White)
70506K	2000-SSTA (24 single splices per tray)

NOTE: For details on available adapter panels please refer to the Multilink Catalog.





Scan QR for website.

Multilink, Inc
580 Ternes Ln
Elyria, OH 44035
Tel: (440) 366-6966
Fax: (440) 366-6802



facebook.com/GoMultilink1



twitter.com/GoMultilink



youtube.com/GoMultilink

North America	Europe, Middle East & Africa	Latin & South America
Tel: +1 440 366 6966 Fax: +1 440 366 6802 Email: engsupport@gomultilink.com	Tel: +1 440 366 6966 Fax: +1 440 366 6802 Email: engsupport@gomultilink.com	Tel: +1 440 366 6966 Mobile: +1 440 366 6802 Email: lasupport@gomultilink.com

Contact Us